

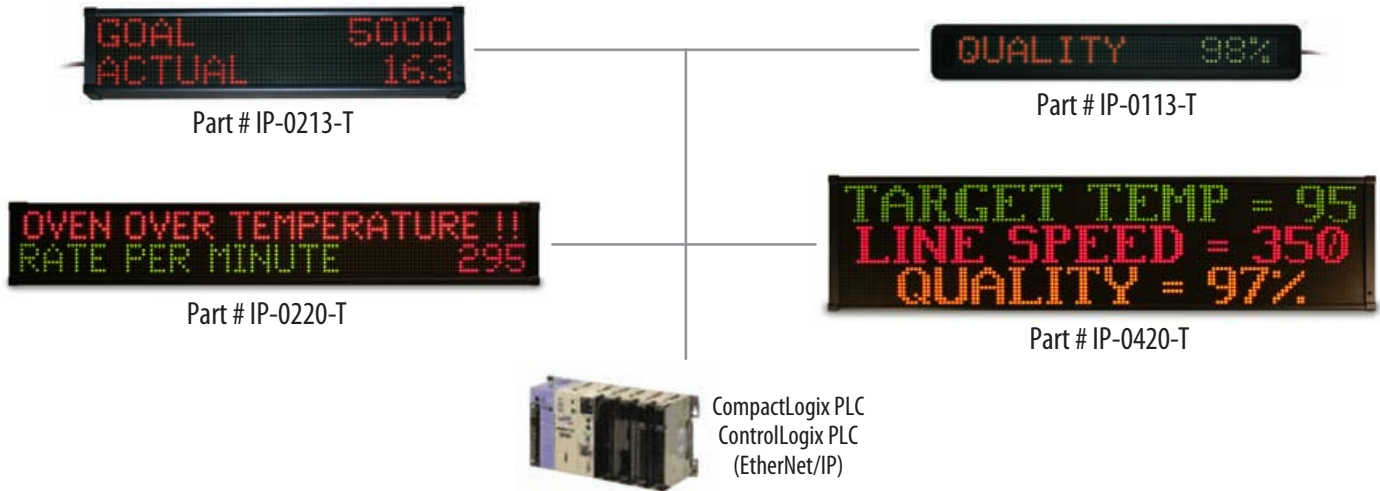
DATAVISOR MARQUEES

Two Ethernet Ports



EMBEDDED
WEB
SERVER

EthernetIP Marquee Series (ROCKWELL® EtherNet/IP)



PRODUCT DESCRIPTION

The EthernetIP Marquee revolutionizes the industrial market on how a marquee sign should connect and communicate on the Rockwell Ethernet/IP network. The EthernetIP Marquee has a built in web server, eliminating the need to install software to program the marquee sign. Setup of the display is as simple as opening a web browser on your computer and entering the IP address of the marquee sign. With its fully integrated package, the EthernetIP Marquee allows the user to configure and broadcast plc data and message information without programming communication blocks within the ladder logic code of the Rockwell software. The product's innovation allows the user to set up the functionality of the marquee sign and simply connect to the plc. The messages viewed can be alarms, machine performance, or production data and are selected and displayed through internal registers from the plc. The EthernetIP Marquee has an additional ethernet port built into the marquee sign. This feature allows the marquee to broadcast information to any computer on the plant network separate from the Ethernet/IP network. The computer can monitor production data and collect real time information from the plant floor by simply entering the IP address of the marquee. With no software to install, the EthernetIP Marquee is the new innovative way for a marquee sign to communicate on the Rockwell Ethernet/IP network.

PRODUCT FEATURES

- **NO SOFTWARE TO INSTALL!** Web based setup
- EtherNet/IP protocol (CompactLogix, ControlLogix)
- Direct register access to plc from the marquee sign
- 2nd ethernet port for data collection to PC
- Monitor plc registers through a built-in web browser
- Broadcast alarm messages and data from the plc
- Backup and restore configuration of the marquee sign
- Collect real time data from the plc on the plant floor

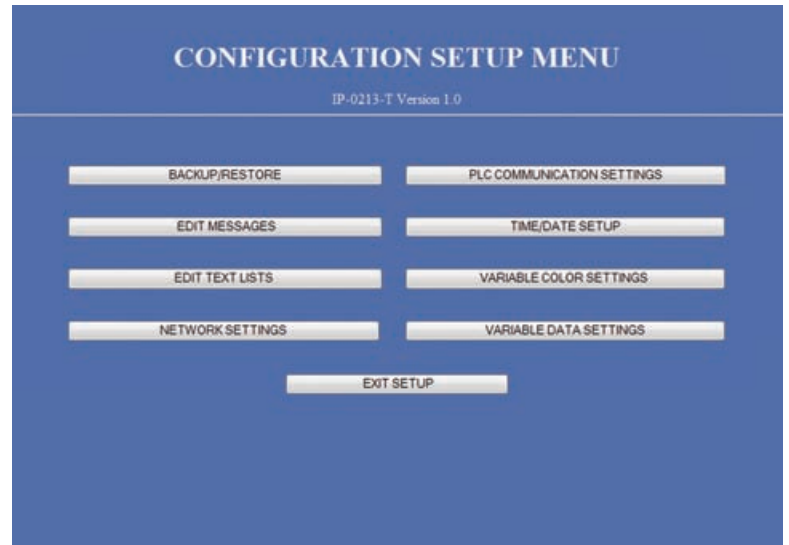
PRODUCT SPECIFICATIONS

- 1, 2, and 4 line alphanumeric display
- 13 and 20 character width
- Bright tri-color LED characters
- Operating temperature 0-55 C
- 100,000 hour rated LED life
- Metal housing; NEMA 1
- Hand held IR programmer
- 120 VAC power; 24 VDC (1 line model)

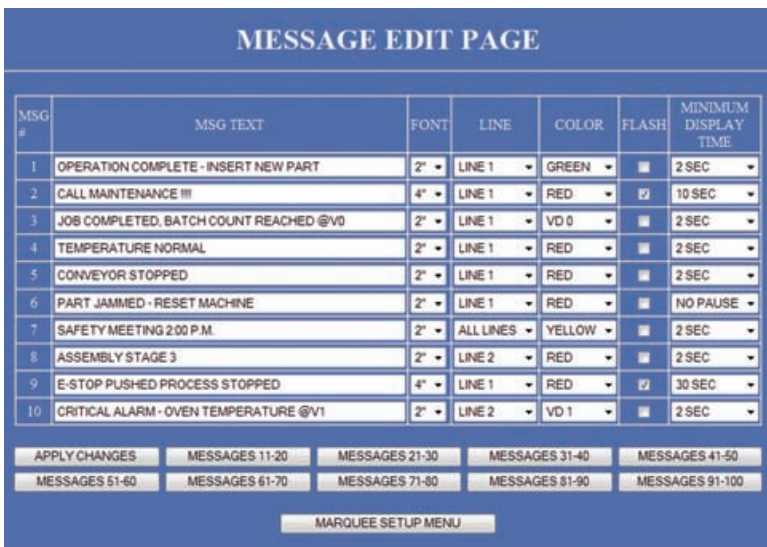
Upon entering the IP address of the marquee sign from the web browser, the monitor page is displayed. This web page is where user configured process values and variable data can be viewed.



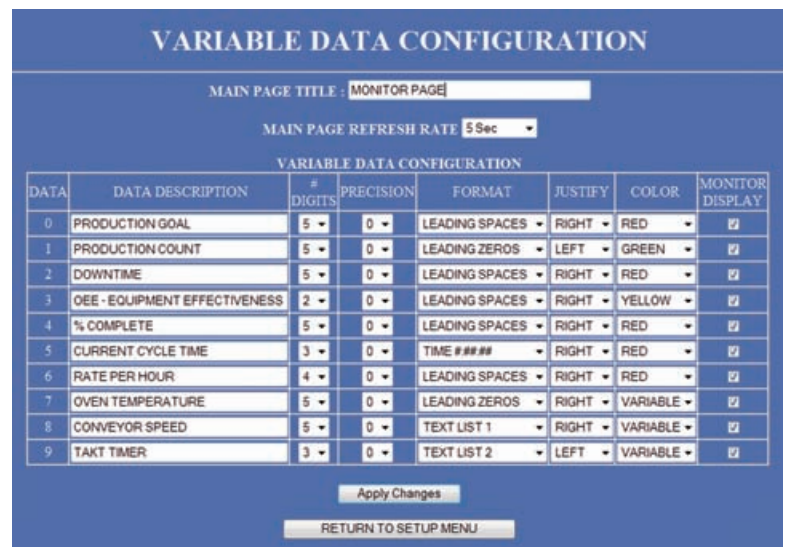
With proper authorization, the user can enter into the marquee sign setup menu. This web page is where the user has access to the marquee configuration pages used to set up the marquee sign.



By selecting the "Edit Messages" button, the user can set up the message text, font size, color, and functionality of the message to be displayed on the marquee sign.



By selecting the "Variable Data Settings" button, the user can set up the variable data from the plc to be displayed on the marquee sign. The format of the variable data is entered here.



PART NUMBER MODEL (*)	DIMENSIONS (W x H x D)	WEIGHT
IP-0113-T (1 line, 13 character, tricolor)	26.0" x 4.5" x 1.75"	2.8 LBS.
IP-0213-T (2 line, 13 character, tricolor)	25.5" x 6.25" x 3.75"	10.8 LBS.
IP-0220-T (2 line, 20 character, tricolor)	39.75" x 6.25" x 3.75"	17.9 LBS.
IP-0420-T (4 line, 20 character, tricolor)	39.75" x 11.0" x 3.75"	26.2 LBS.

(*) Double sided models available